

RIVEDIL®

EXCLUSIVE PAINT

MADE IN ITALY

By C. C

STILE
BAROCCO
MARMORINO

WWW.RIVEDIL.COM





OX - 54

TOTAL MATT





OX - 54

CERA D'ARTE ARGENTO



OX - 54 GLOSSY

CERA D'ARTE NEUTRA



OX - 50



OX - 45



OX - 49



OX - 44



OX - 48



OX - 43



OX - 47



OX - 42



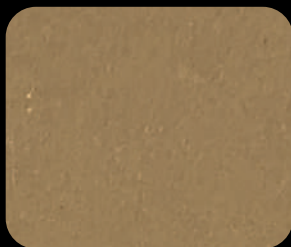
OX - 46



OX - 41



OX - 40



OX - 35



OX - 39



OX - 51



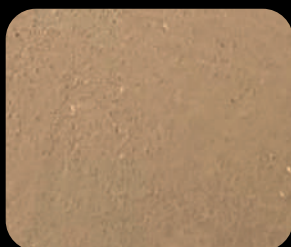
OX - 38



OX - 33



OX - 37



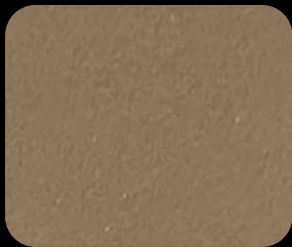
OX - 32



OX - 36



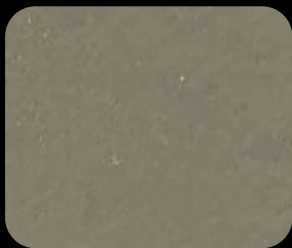
OX - 31



OX - 30



OX - 25



OX - 29



OX - 52



OX - 28



OX - 23



OX - 27



OX - 22



OX - 26



OX - 21



Video

STILE BAROCCO MARMORINO



WWW.RIVEDIL.COM



INFINITINT
COLOR TINTOMETRIC SYSTEM

DECORAZIONI RIVEDIL s.r.l.
VIA PROVINCIALE SALICE-VEGLIE 1 KM 0,500
73015 SALICE SALENTINO (LE - ITALY) - TEL. (0)832 731293
INFO@RIVEDIL.IT - EXPORT@RIVEDIL.COM

COD: PF 405/23.A - TINTOMETRIC TINTING

All Rights reserved ©. Tutti i diritti sulla presente cartella ed i suoi contenuti appartengono a Decorazioni Rivedil s.r.l.



- IT** Stucco rustico a base di calce e polveri di marmo per interni ed esterni.
- EN** Rustic plaster with a lime & marble powder base for indoor and outdoor use.
- FR** Stucco rustique a base de chaux et poder de marbre pour l' intérieure et extérieure
- DE** Rustikaler Edel-Putz auf Basis von Kalk und aus-
gesuchten Marmormehlen für den Innen-und Außenbereich.
- CN** 一种质朴的灰泥，基础材料是石灰和大理石粉，适用于室内外。
- ES** Estuco rústico a base de cal y polvo de mármol para uso interno y externo.
- AR** مارمورينو دهان "معجون" مائي ديكوري عالي اللزوجة ، يدخل في تكوينه الحجر و حبيبات الرخام الطبيعي ، يستعمل للتطبيقات الداخليه و الخارجيه.
- SQ** Stuko Rustico me basë gëlqerore dhe pluhur mermeri, për ambiente të brëndshme dhe të jashtme.
- RU** Старинная штукатурка на основе извести мраморной пыли для внутренних и внешних работ
- PL** Stuk wapienny rustykalny z dodatkiem proszku z marmuru do użytku wewnętrznego i zewnętrznego.

ATTENZIONE:

I colori dei campioni sull'intero catalogo sono indicativi. A causa della natura dei prodotti decorativi si consiglia di controllare sempre la colorazione in anteprima. In base alla temperatura il materiale potrebbe densificarsi, in tal caso diluire con acqua secondo le istruzioni della scheda tecnica.

NOTICE:

The colours displayed by samples contained in the catalogue are purely indicative. Due to nature of decorative paints you should always check the color preview: depending on the temperature the material may thicken. In that case dilute with water, according to the instructions on the technical data sheet.

STILE BAROCCO MARMORINO



FOR FURTHER DETAILS CONSULT THE TECHNICAL DATA SHEET

BASE STILE BAROCCO MARMORINO L 4 - L 15



1-1.2 m²
2 coats

PRIMER DECOR FONDO L 0,750 - L 2,5 - L 4 - L 15



5-10%

6-8m²

6-12 h

CERA D'ARTE L 0,750



35-40 m²

6-12h



FRATTONE ABILE LUX